

# 2203, 2301, 2307 N MAIN ST

COLUMBIA | SOUTH CAROLINA



**FOR SALE** | 8,000 SF Buildings On 1 Acre

**CONTACT:**

**J.P. SCURRY, CCIM**  
JP@croslanbarnesgroup.com  
Office: 803.254.0350  
Cell: 803.361.7464

**SCOTTIE SMITH**  
Scottie@croslanbarnesgroup.com  
Office: 803.254.0350  
Cell: 864.230.7076



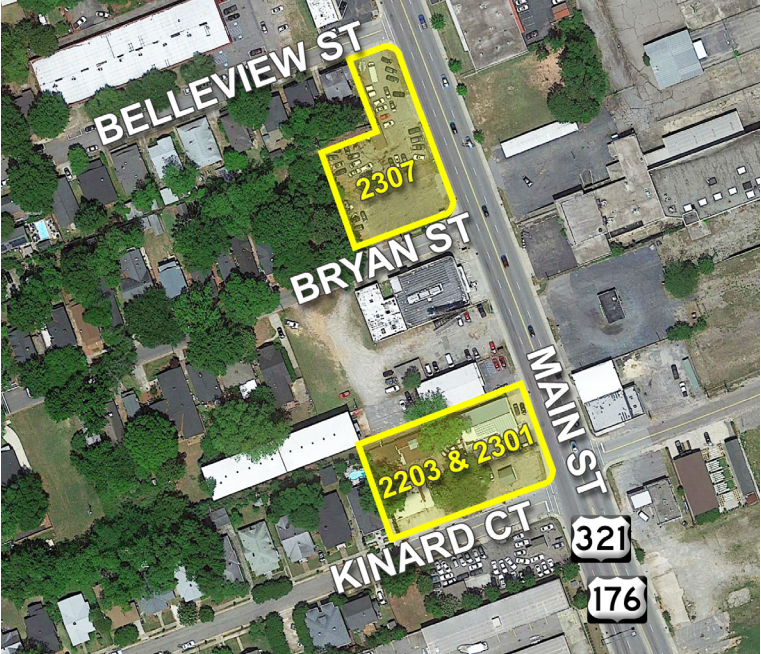
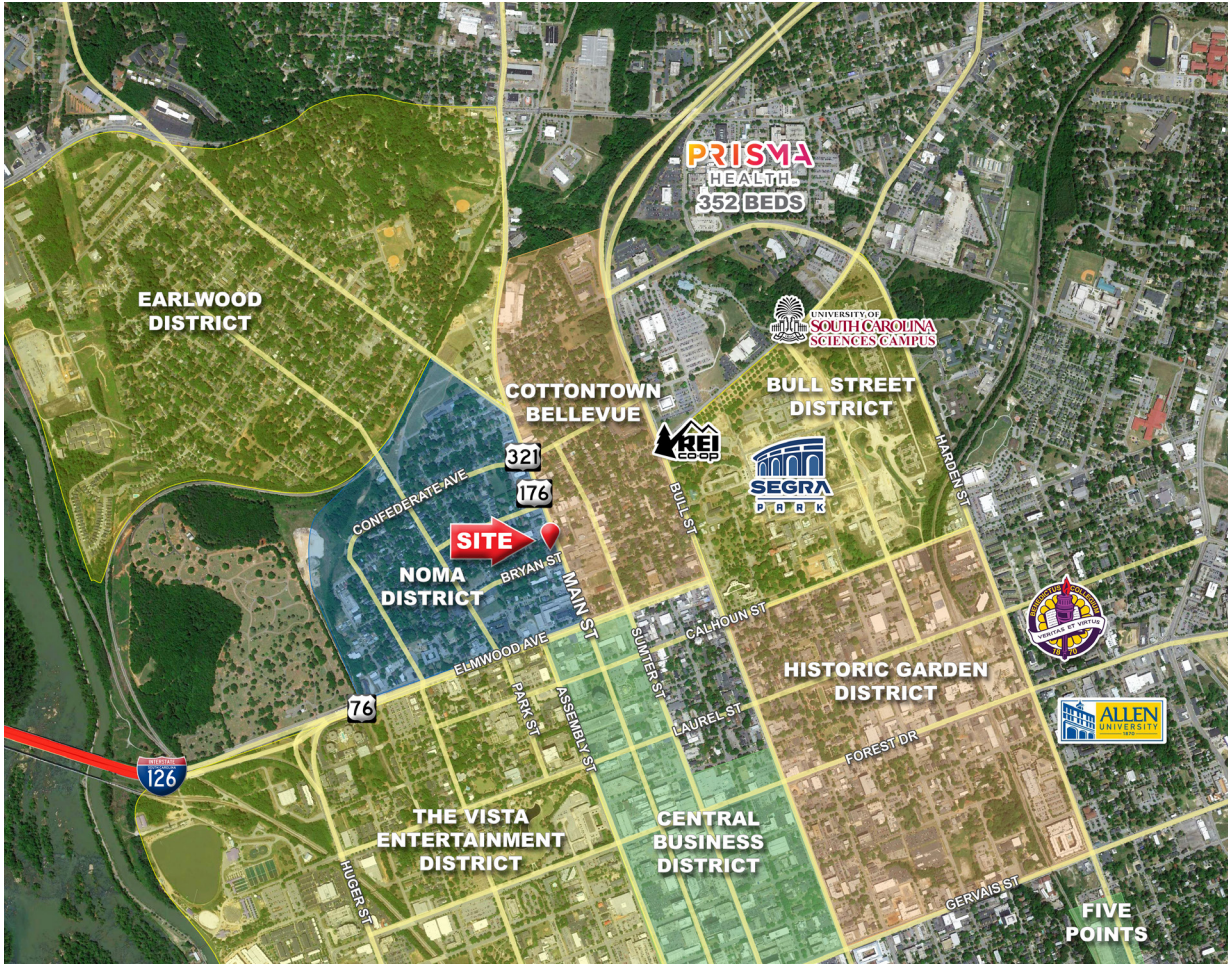
CROSLAN BARNES GROUP  
1332 Main Street | Suite 30  
Columbia, SC 29201  
croslanbarnes.com



**FOR SALE | 8,000 SF Buildings On 1 Acre**

# In the Heart of Columbia's North Main

Columbia's next hot spot, the approximately 5-mile stretch between Elmwood and I-20 is currently undergoing a major transformation. The redevelopment is fueled by several factors including the revitalization of Main Street, the flourishing Vista and Five Points areas and the massive BullStreet District project (the largest urban redevelopment project on the East Coast). Announced Tenants include REI, Starbucks and Capgemini consulting company. The iconic, 146,000 SF Babcock Building will transform into a premiere 200+ luxury apartment complex. Site clearing for the future University of South Carolina Health Sciences Center along Harden Street is underway.



2019 DEMOGRAPHICS	1 Mile	3 Miles	5 Miles
Population	5,496	82,149	176,421
Growth 2019 - 2024	2.3%	1.0%	1.2%
Average Household Income	\$62,193	\$54,389	\$60,480
Median Age	32.8	28.3	31.3
Daytime Employees	38,706	118,036	189,390
College Student Population	696	41,493	49,012

**2203, 2301, 2307 N MAIN ST | NOMA - NORTH MAIN**

